

Denali Borough, Alaska
Planning Commission

Resolution No. PC 11-03

**A RESOLUTION IN SUPPORT OF THE REINTRODUCTION AND PASSAGE
OF A BILL TO CREATE THE STAMPEDE STATE RECREATION AREA
DURING THE 27TH LEGISLATIVE SESSIONS.**

WHEREAS, all formal acts by the Planning Commission must be by resolution; and

WHEREAS, the Denali Borough's local government is well suited to make recommendations for land use within the Denali Borough; and

WHEREAS, there are no State Parks, Recreation Sites or Areas located within the Denali Borough; and

WHEREAS, the designation of a Stampede State Recreation Area provides an opportunity to maintain traditional uses on public lands adjacent to settlement lands; and

WHEREAS, the designation of a Stampede State Recreation Area would provide recreational opportunities for residents within the Borough and throughout the State; and

WHEREAS, the lands included in the proposed Stampede State Recreation Area are recognized by the state as unique and important for wildlife habitat and recreation.

THEREFORE BE IT RESOLVED, that the Denali Borough Planning Commission requests that the Alaska Legislature reintroduce and pass a bill to create a Stampede State Recreation Area in a timely manner.

BE IT FURTHER RESOLVED, that the Denali Borough Planning Commission supports the designation of State Recreation Area lands including: Fairbanks Meridian, Healy Quadrangle, Township 12S8W sections 6, 7, 18, 19, 30, 31; Townships 12S9W, 12S10W, 12S11W; Township 13S9W sections 1-6 and 7-12, excluding National Park lands; Township 13S10W sections 1-6 and 7-12 excluding National Park lands; Township 13S11W sections 1-6 and 7-12 excluding National Park lands. **Refer to attached map.**

PASSED and APPROVED by the DENALI BOROUGH PLANNING COMMISSION this 18th day of January 2011.

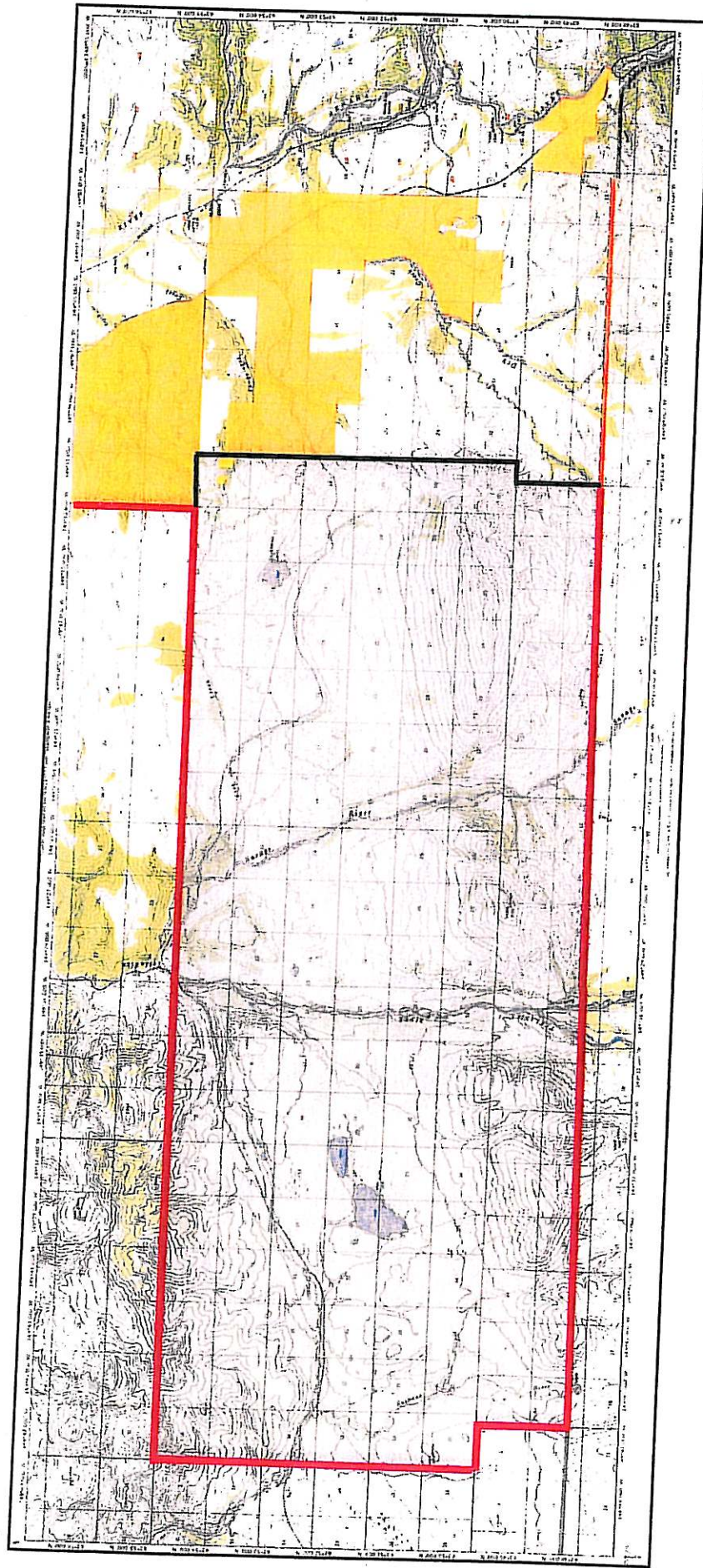

Presiding Officer

ATTEST:


Deputy Clerk

VOTE: YEA: Capistrant, Chatfield, Griggs, Jones, Michaels, Mitchell, Potter
NAY: 0
ABSENT: Weibel





Stampede State Recreation Area proposal



Stampede State Recreation Area



Borough/Private lands
(between Rec Area and Nenana River, not
including AK RR lands and some small parcels)



Boundary with Denali National Park