

## **OPTION A, 7 SEATS SERVING 5 DISTRICTS**

### **DISTRICT 1 (CANTWELL AREA)**

Seats = 1

Population = 216

Milepost 201 north to Milepost 226

This district is very similar to the current district but stretches farther north and captures the Carlo Creek area.

### **DISTRICT 2 (DENALI AREA)**

Seats = 1

Population = 243

Milepost 226 north to Milepost 247

This district starts north of Carlo Creek and stretches north to the Nenana River Bridge (Windy Bridge). This district also captures the north east side of the Parks Highway to MP 247 (often referred to as the Garner area).

### **DISTRICT 3 (OTTO LAKE, HEALY)**

Seats = 3

Population = 230 ea.

Milepost 247 to 250

This district starts at the Nenana River bridge (Windy Bridge) and captures the east side of the Parks highway from the bridge to Milepost 247, then captures both sides of the highway from MP 247 to MP 250 (the Stampede and Lignite roads).

NOTE: this district configuration will split the Stampede and Lignite road by having residents on the South side of Stampede and Lignite in District 3, and residents on the North side of Stampede and Lignite in District 4.

### **DISTRICT 4 (NORTH STAMPEDE/LIGNITE TO REX BRIDGE)**

Seats = 1

Population = 225

Milepost 250 to Milepost 276

This district starts at the Stampede/Lignite road and stretches north to the Nenana River Bridge (Rex Bridge). The communities of Ferry, Rock Creek, June Creek, Kobe Ag area, are all included in this

NOTE: this district configuration will capture the residents on the north side of the Stampede and Lignite roads and continue north to the Rex Bridge.

### **DISTRICT 5 (ANDERSON/CLEAR)**

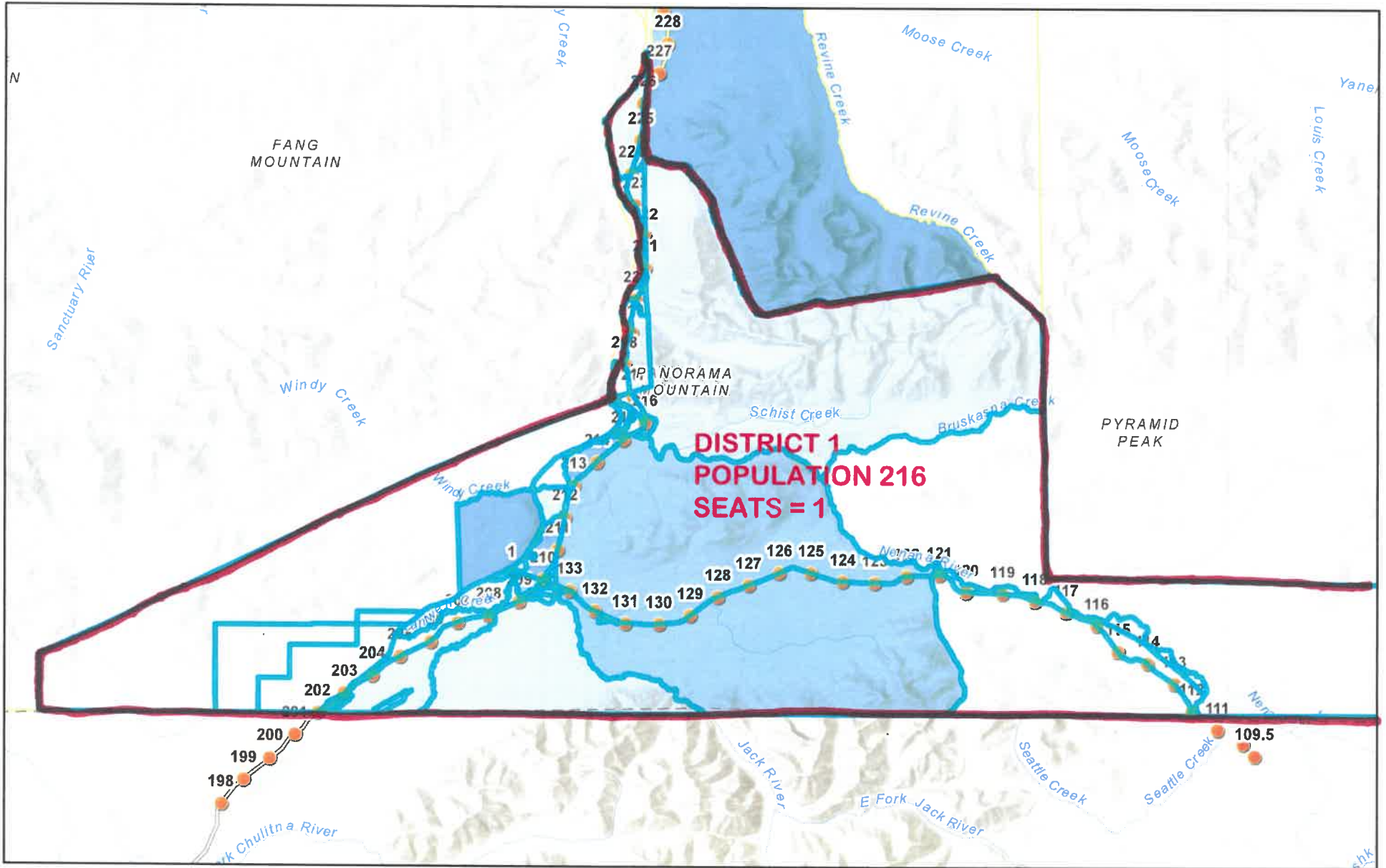
Seats = 1

Population = 238

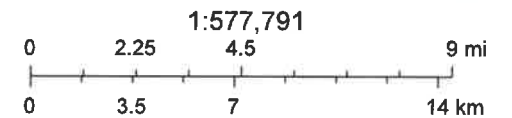
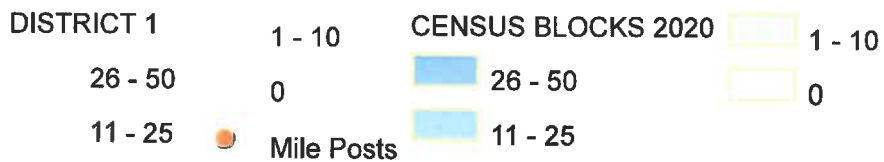
Milepost 276 to Milepost 287

This district starts at the Nenana River Bridge (Rex Bridge) and stretches north to the North Boundary of the borough.

# DISTRICT 1, 1 SEAT, SOUTH BOUNDARY TO MP 226, POP 216

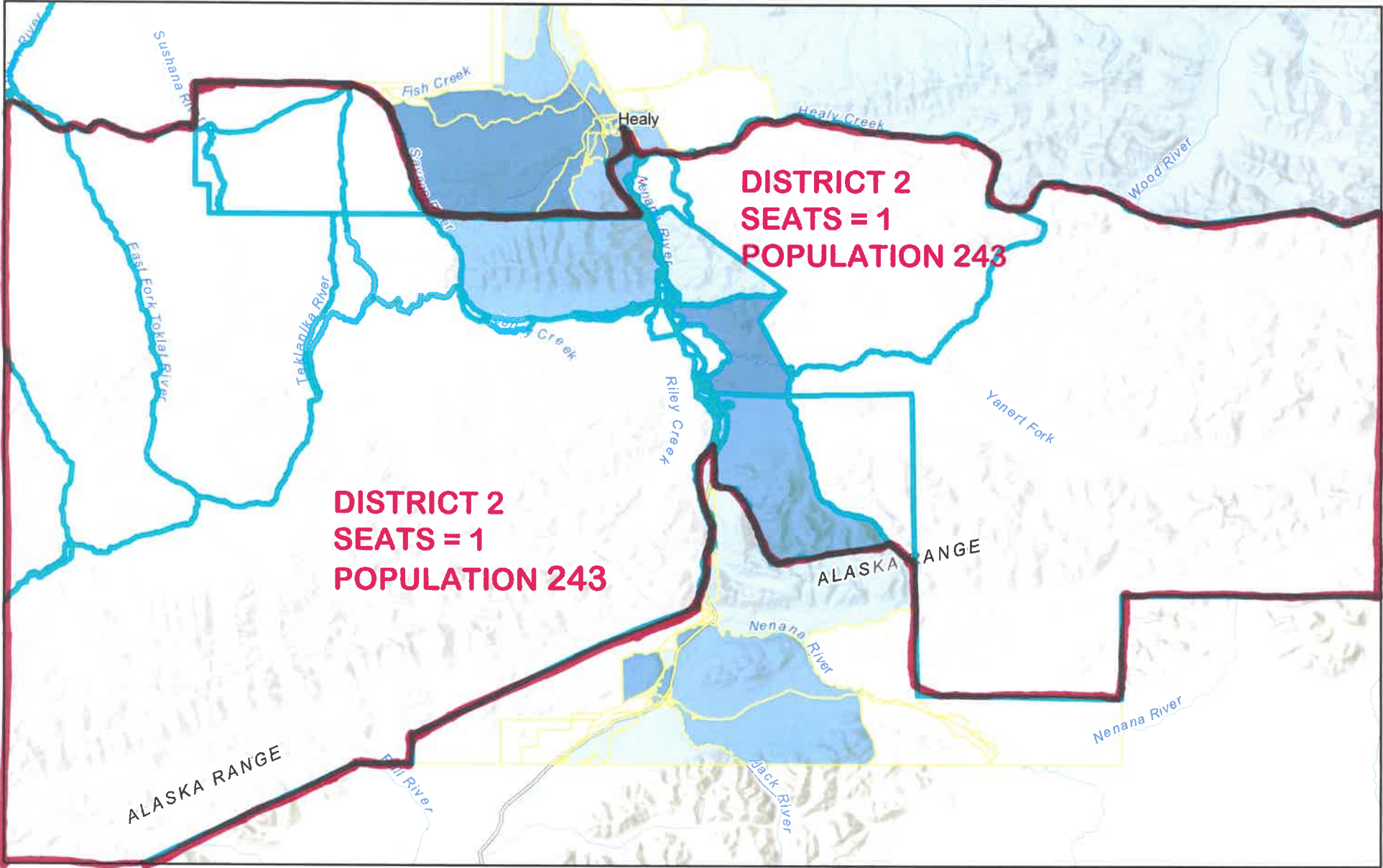


4/26/2022, 11:46:47 AM



Sources: Esri, Airbus DS, USGS, NGA, NASA, CGIAR, N Robinson, NCEAS, NLS, OS, NMA, Geodatastyrelsen, Rijkswaterstaat, GSA, Geoland, FEMA,

# DISTRICT 2, SEAT 1, POP 243, MP 226 TO MP 247

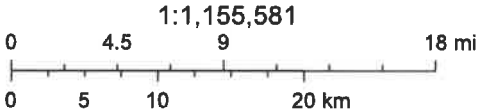


4/26/2022, 2:28:37 PM

DISTRICT 4, 1 SEAT, POP 243, MP 226 TO MP 247

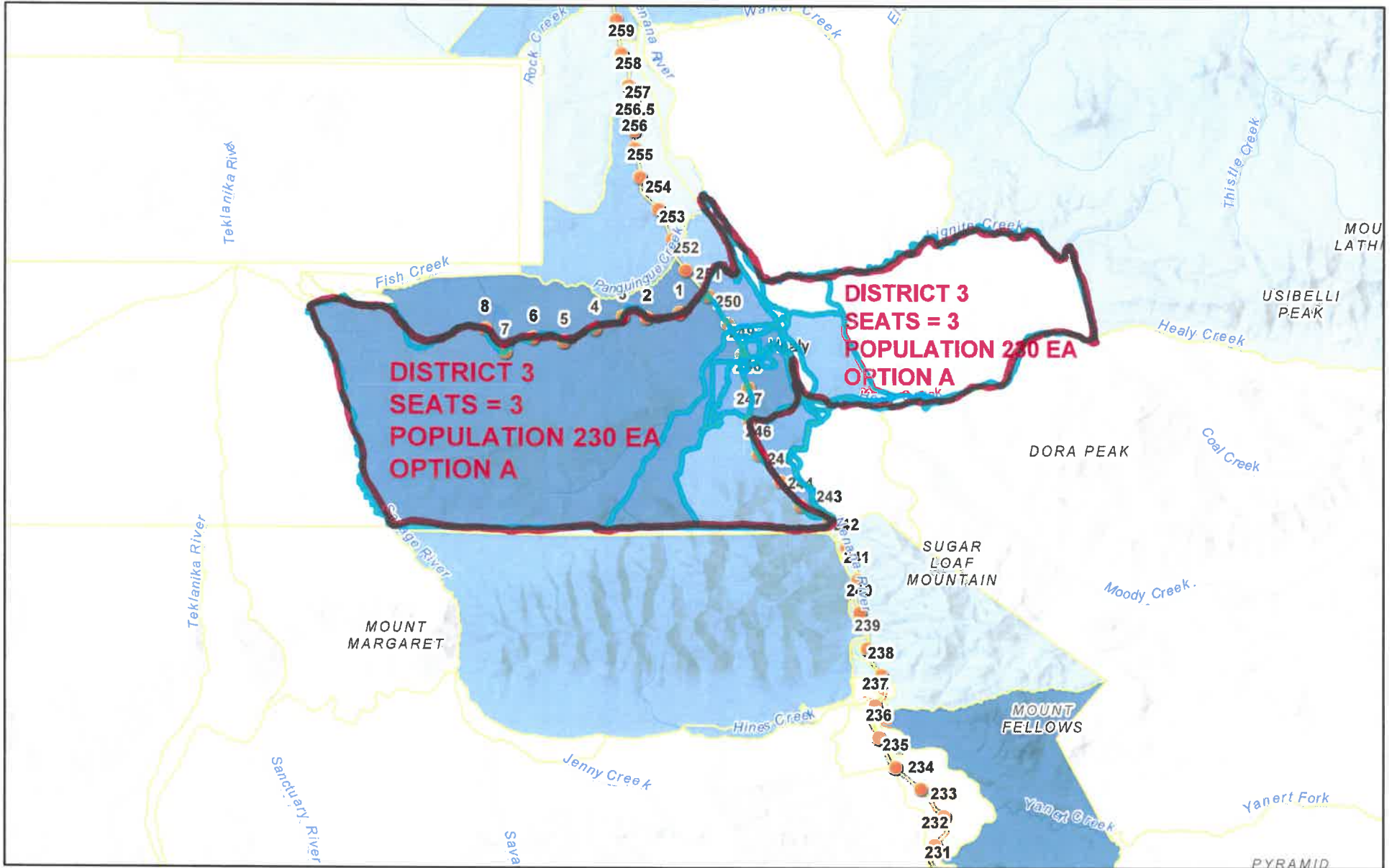
- 51 - 97
- 26 - 50
- 11 - 25

|                           |         |
|---------------------------|---------|
| 1 - 10                    | 26 - 50 |
| 0                         | 11 - 25 |
| <b>CENSUS BLOCKS 2020</b> | 1 - 10  |
| 51 - 97                   |         |



Sources: Esri, Airbus DS, USGS, NGA, NASA, CGIAR, N Robinson, NCEAS, NLS, OS, NMA, Geodatalystyrelsen, Rijkswaterstaat, GSA, Geoland, FEMA,

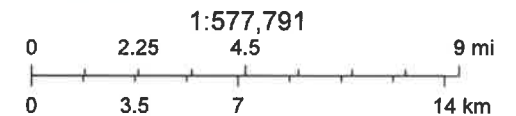
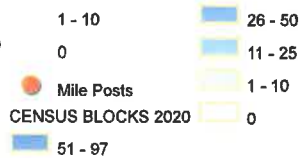
# DISTRICT 3, OPTION A, SEATS 3, POP 230 EA. MP 247 TO SOUTH STAMPEDE/LIGNITE



4/26/2022, 4:56:17 PM

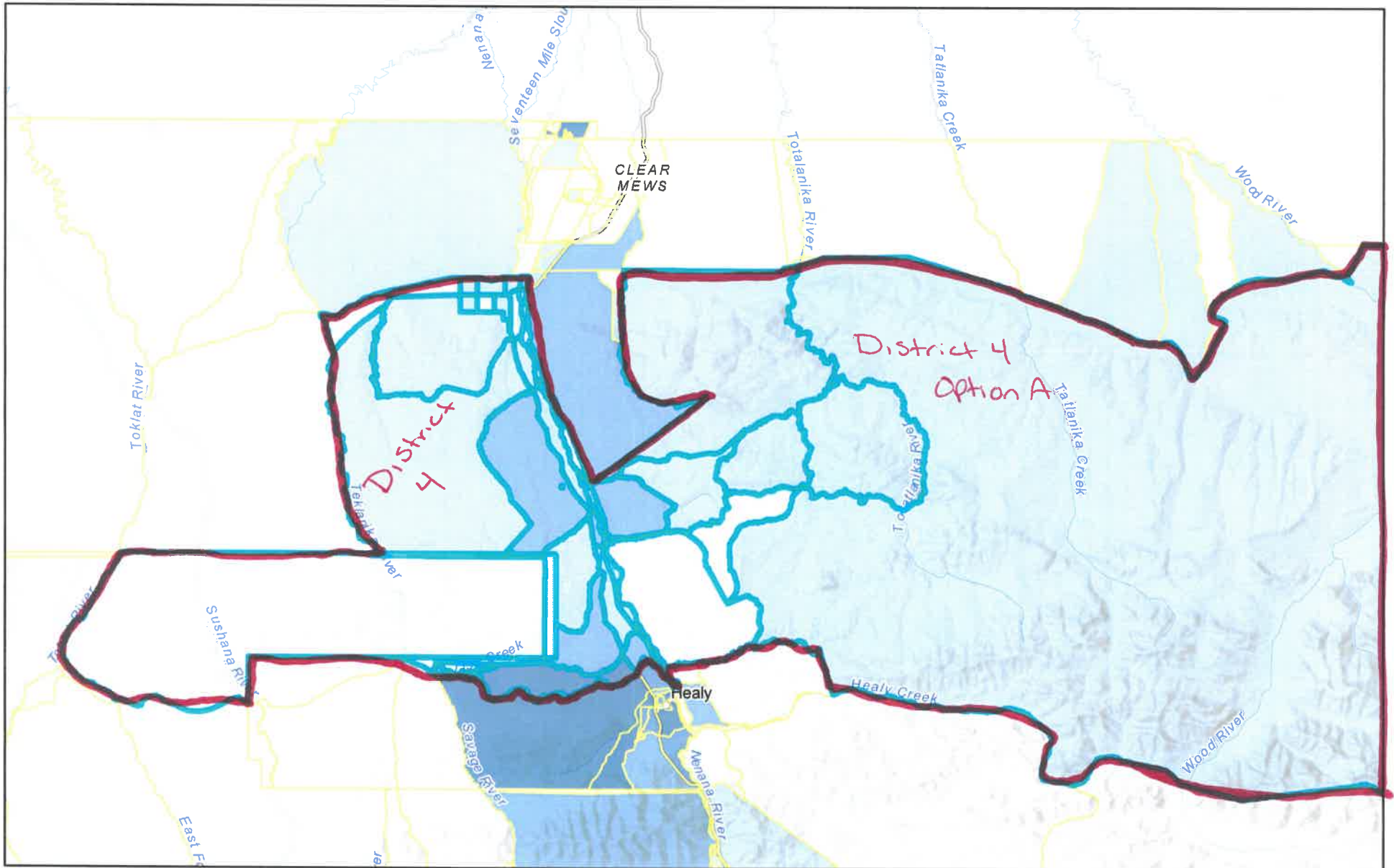
Override 1  
 DISTRICT 3, SEATS = 3, POP 230 EA., MP 247 TO SOUTH STAMPEDE/LIGNITE ROAD

51 - 97  
 26 - 50  
 11 - 25



Sources: Esri, Airbus DS, USGS, NGA, NASA, CGIAR, N Robinson, NCEAS, NLS, OS, NMA, Geodatastyrelsen, Rijkswaterstaat, GSA, Geoland, FEMA,

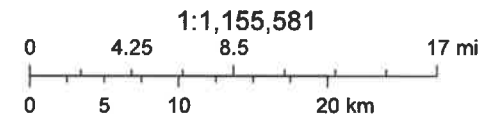
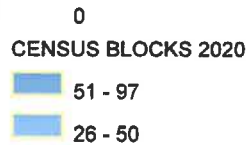
# DISTRICT 4, OPTION A, POP 225, NORTH STAMPEDE/LIGNITE TO REX BRIDGE



4/26/2022, 5:21:11 PM

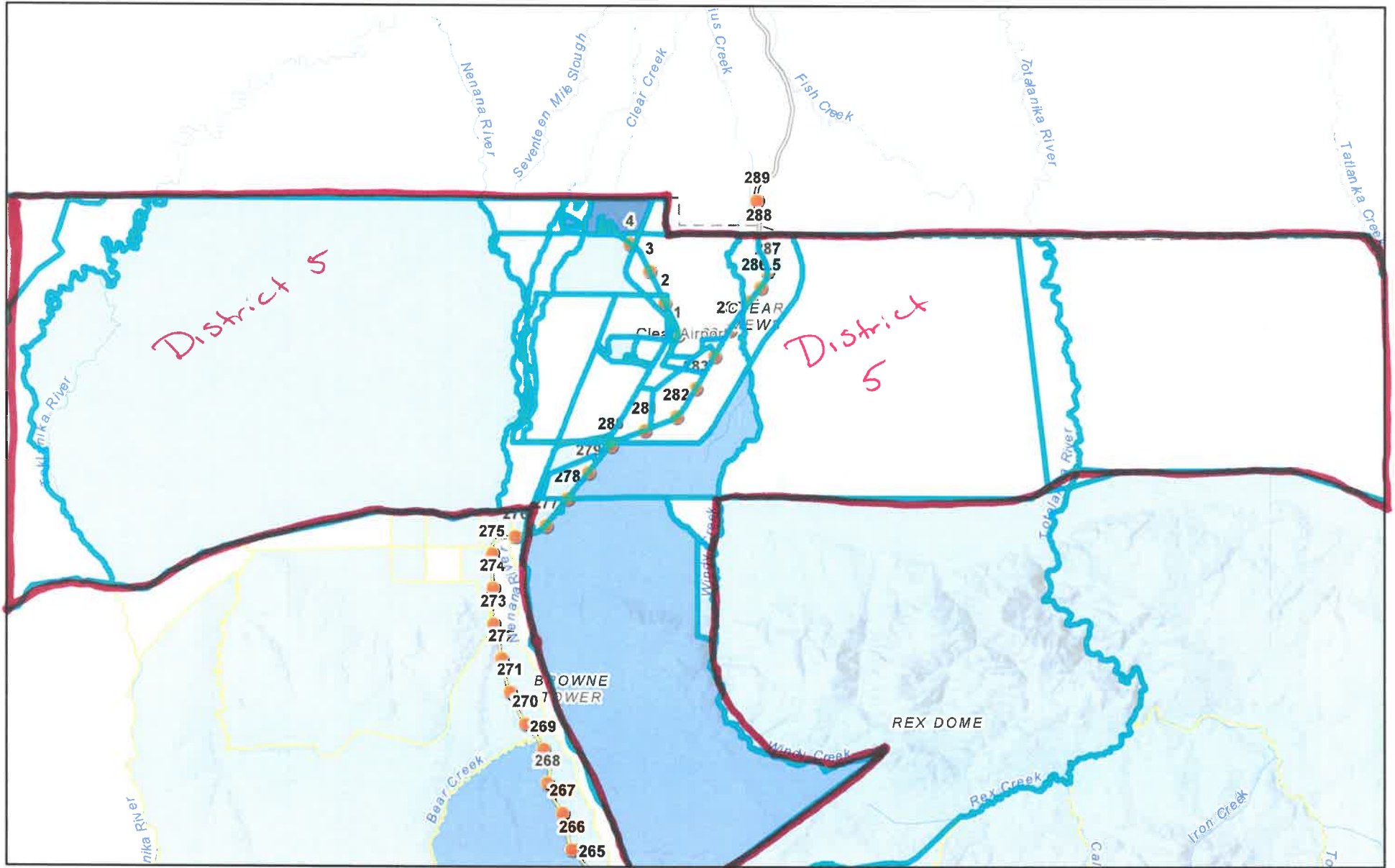
DISTRICT 4, OPTION A, POP 225, SOUTH STAMPEDE/LIGNITE TO REX BRIDGE

- 51 - 97
- 11 - 25
- 1 - 10

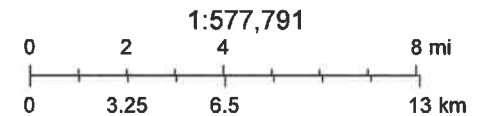


Sources: Esri, Airbus DS, USGS, NGA, NASA, CGIAR, N Robinson, NCEAS, NLS, OS, NMA, Geodatastyrelsen, Rijkswaterstaat, GSA, Geoland, FEMA,

# DISTRICT 5, OPTION A, POP 238, REX BRIDGE NORTH



4/26/2022, 5:48:15 PM



Sources: Esri, Airbus DS, USGS, NGA, NASA, CGIAR, N Robinson, NCEAS, NLS, OS, NMA, Geodatasysteisen, Rijkswaterstaat, GSA, Geoland, FEMA,