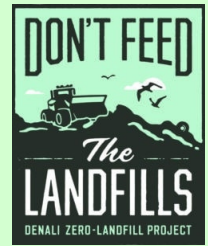




# Denali Borough RECYCLING GUIDE

CONTACT: 907.582.1330  
OR  
[WWW.DENALIBOROUGH.ORG/RECYCLE](http://WWW.DENALIBOROUGH.ORG/RECYCLE)



RECYCLABLE MATERIAL	DENALI BOROUGH LANDFILL	HEALY TRANSFER STATION	CANTWELL TRANSFER STATION	MATERIAL DESCRIPTION
<b>MIXED PAPER</b>		 (MAY - SEPT)		Magazines, catalogs, paperboard, paperboard core tubes, egg and packing cushion cartons, craft bright and dark colored paper, folders, envelopes and gift wrap. <b>MUST BE CLEAN AND DRY</b>
<b>CARDBOARD</b>		 (MAY - SEPT)	 (MAY - SEPT)	Corrugated, clean, dry, empty and broken down.
<b>PLASTIC</b>		 #1 (MAY - SEPT)	 #1 #2 #5	No bottle lids, caps or pumps. Empty contents and rinse.
<b>BULBS</b>				Compact fluorescent bulbs are accepted in a sealed bag for .15 cents each.
<b>ALUMINUM</b>		 (MAY - SEPT)		Beverage cans, empty and rinsed, crushed or whole.
<b>ELECTRONICS</b>				Includes TVs, computer monitors and base, cell phones. Residential only.
<b>BATTERIES</b>				Includes household, vehicle, and heavy equipment. Household alkaline batteries will be accepted in a segregated container.
<b>OIL AND PAINTS</b>				Includes latex and oil based paints, stains, used motor and hydraulic oils, antifreeze, cleaners, adhesives, and other solvents. call or visit the website for a full list of Household Hazardous Waste accepted.
<b>MATTRESSES</b>				Residential customers only with a \$15.00 handling fee.
<b>SCRAP METAL</b>				Scrap metal includes steel, aluminum, brass, copper, stainless steel, drained radiators, lead, tin, cables, and pipes.
<b>APPLIANCES (CONTAINING FREON)</b>				Includes refrigerators, chest and upright freezers, and water coolers) with a \$50 Disposal Fee.



**These Recyclable Materials are accepted through Cantwell Recycling three days a week. Hours may differ from CTS schedule.**