



# Antler Ridge Trail

Denali Borough

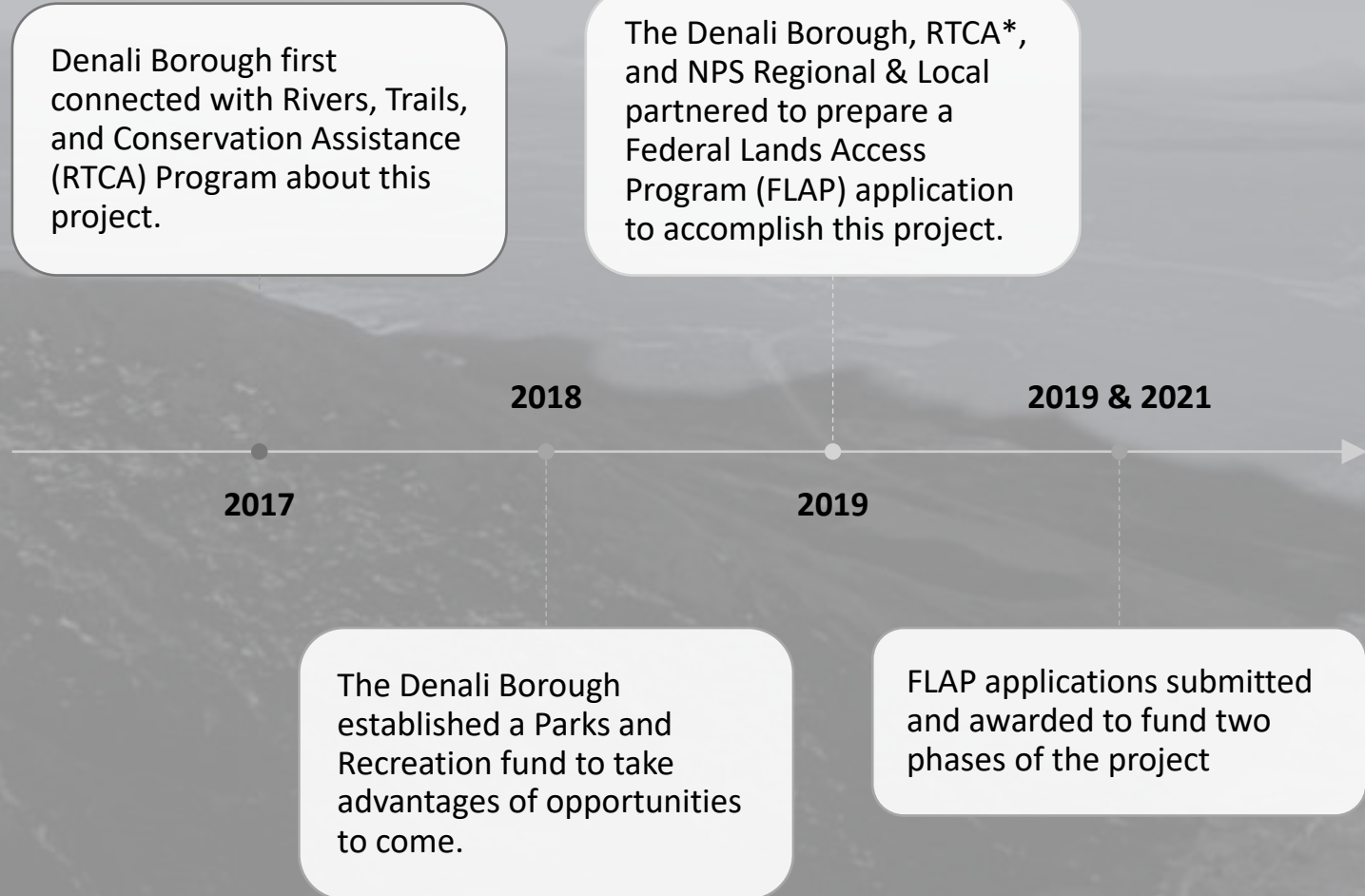
# How Did It Start?

The Denali Borough recognized the need to relocate and improve access for a social trail that ascends to Mt Healy from the Park's Highway, commonly known as the Bison Gulch Trail:

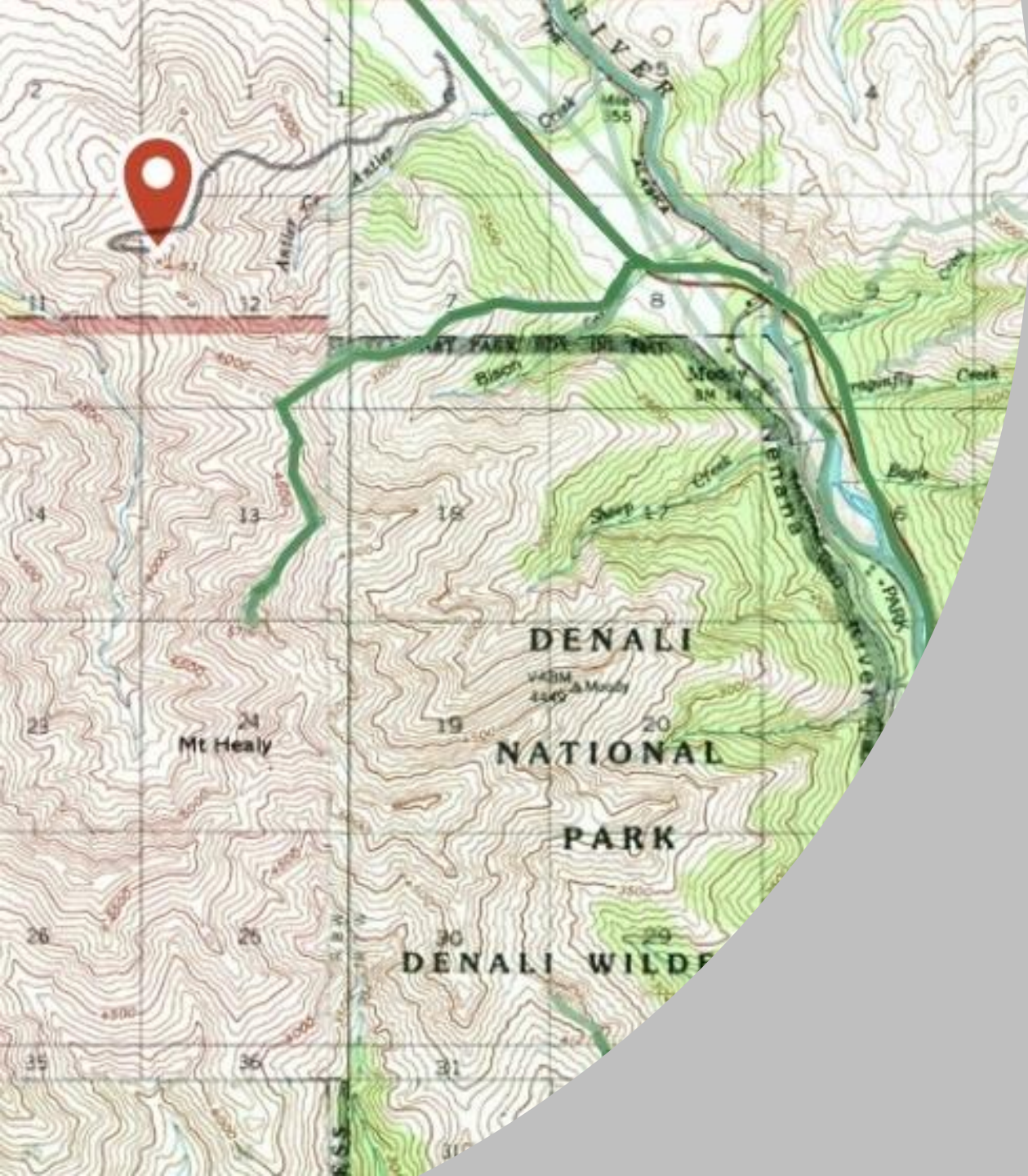
- Included in the 2017 Needs List submitted to DOT for STIP consideration.
- Community priority in the Denali Borough's 2018 Land Use and Economic Development Plan.
- Featured trail project in the 2019 Alaska Statewide Trails Initiative draft report.
- Identified in the Cantwell to Healy Planning and Environmental Linkages (PEL) Study.



# Timeline – How We Got to Today



\*RTCA's assistance was secured through their community assistance grant program



# FLAP Applications

## **2019: Phase 1**

Planning and relocation of parking lot to establish a new trail head – now at Antler Ridge

## **2021: Phase 2**

Trail design and construction, environmental compliance, SST toilet, and interpretive signs



# Partnerships Have Been Everything

---

- Western Federal Lands
- AK DOT&PF
- NPS – Regional & Local
- RTCA
- AK DPOR
- AK DNR

# Trail & Next Steps

A trail that offers both access and challenge.

Designed as a standard terra trail for hikers and walkers:

- 1-mile accessible loop, which will branch off as it starts to climb the ridge.
- The branch off will start with 1 mile of trail on Borough land.
- The trail will continue for 2.5 miles up to Black Diamond Peak, just shy of the wilderness boundary of Denali National Park.

**2022:** partnership with RTCA to provide two Denali NPS trail crew staff time to establish a functional trailhead with volunteer crews.

**2023:** \*SST toilet construction.

**2024:** \*Design and compliance work.

**2025:** \*Trail construction!

*\*Tentative dates*





# With “New” Comes “More”

Signage – What is important to communicate?

Education – How do we ensure good trail stewardship?

Marketing – When do we promote the trail?

Maintenance – What will the cost per mile be?

Safety – How do we manage that responsibility?

What aren't we thinking of?



COMING SOON: Denali Borough Comprehensive Trails and Outdoor Recreation Plan