

Healy Community Wildfire Protection Plan 2024

Appendix D – Mitigation Recommendations

The following supplemental information for the Denali Project lists mitigation recommendations for the Healy CWPP Update. These are incorporated into all the respective plan Appendix D documents. The link embedded in the following map will display the treatment polygons for the entire borough. To review the Healy CWPP recommendations, zoom into the map.

These are proposed mitigation treatments, and each project must be approved by the respective landowners and jurisdictions before any work can be initiated.

This should be read with the respective CWPP documents for Denali Borough, Cantwell, McKinley Village, Healy and Anderson, including the Appendices A, B and C.

This report was funded by the US Forest Service through the Alaska Division of Forestry and Fire Protection. This report was prepared for the Denali Borough Alaska by Bintel Inc with partners Fire Adaptive Solutions, FirePoint Forestry and Athena Intelligence.



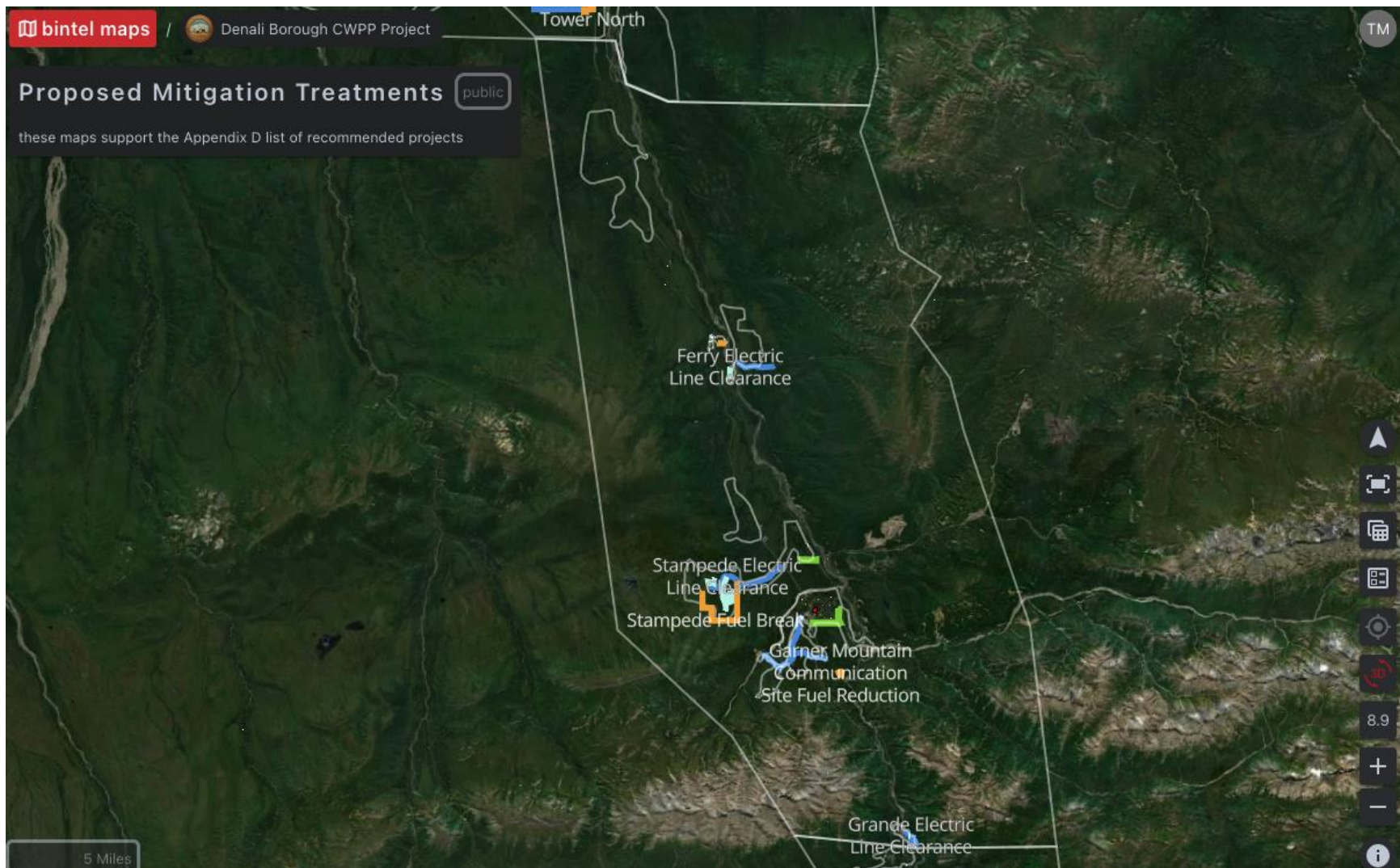


Figure 1 – Healy Treatments

NOTE: To view the details of the treatments and recommendations click on the map above or

https://maps.bintel.io/o/denali_borough_cwpp_project_public/maps/mitigationfixed?lat=63.96978348677632&lng=-149.15820132332715&pitch=0&zoom=8.868617723967288&bearing=0.149.31700359335366&pitch=0&zoom=7.633196938828914&bearing=0

Implementation Plan

Below are strategic actions for residents of Healy, the Denali Borough, State of Alaska CWPP Implementation Committees, and other community groups, land managers, county, state, and federal agencies to accomplish immediately or in the mid- or long-term, consistent with AK-DOF guidelines for CWPP review and update deadlines. Definitions are provided below.

Immediate Action	<ul style="list-style-type: none"> • Partners are encouraged to initiate this project in 2025. • This project offers the greatest potential for immediate return on investment. • It can be financed within the existing capacity of CWDG and partner organizations, supplemented by available grants within the next 12 to 18 months. • Implementation can proceed with minimal or no expansion of the current staff within the borough and partner organizations. • The project can leverage existing relationships with emergency response partners, land management agencies, and non-profit organizations.
Short-term Priority	<ul style="list-style-type: none"> • Partners should aim to initiate this project by 2026. • The project will necessitate a moderate increase in the financial and implementation capacities of the Denali Borough and partner organizations. • Establishing new collaborative relationships with emergency response partners, land management agencies, and non-profit organizations will be essential. • Enhanced coordination among partners will be required for successful implementation. • A higher degree of community engagement and decision-making will be necessary throughout the process.
Mid-term Priority	<ul style="list-style-type: none"> • Partners should aim to commence this project by 2029. • The project will involve multi-year planning and securing necessary funding. • A significant amount of grant funding will be essential for its success. • Considerable growth in the financial and implementation capacity of the Denali Borough and partner organizations will be required. • Extensive coordination among partners will be necessary for effective execution. • A robust level of community engagement and decision-making will be crucial throughout the process.
Long-term Projects	<ul style="list-style-type: none"> • Partners are not anticipated to begin this project within five years of signing this CWPP, unless new opportunities arise. • While these projects could be suitable for the community, they may not be as impactful as the other identified priorities. • These initiatives may serve as potential foundations for the next CWPP Update Action Plan.

Certain activities involve minimal financial expense but demand a significant shift in attitudes and behaviors to emphasize wildfire risk mitigation. Other measures are more extensive, calling for community-wide commitment and collaboration to pool resources, apply for grants, and make gradual progress toward impactful change. Many of these recommendations are ambitious and will require increased capacity and funding, as well as patience and dedication from community members and leaders to achieve lasting improvements.

Contact the Borough for guidance before starting any projects.

Instruction on how to use the table and map.

1. The table lists all specific mitigation projects generally for the Borough and Residents and specifically for each of the CWPP AOs.
2. If there is an asterisk next to the title of the project, there will be a map to view for location. The Figure 1 Map of the entire Borough is clickable and will take you to an online map which you can zoom into for all projects.
3. For ease of navigation, there is a set of maps at the end of Appendix D that if clicked will take you to a view of the mitigations for just that area on the map.
4. The GIS features on the map are from several different sources and are color coded accordingly:
 - a. Blue are roadside treatments.
 - b. Blue green is for electric line corridors, both distribution and the Intertie.
 - c. Green is from the AK-DOF and BLM files, both planned and completed.
 - d. Orange is recommended fuel treatments not associated with roads or powerlines.
 - e. Red zones are recommended safety zones if a fire occurs.
5. The entities generally responsible for either completing or approving the work are listed but this is subject to change.
6. The list is to be used as a guide for grant applications.

Healy CWPP

Recommendation	Goals	Responsibility	Priority Level
Rock Creek Fire Break*	Create high quality defensible space to reduce potential fire severity, increase the chance of home survival during wildfire events, and strengthen the community boundary	Denali Borough, Tri-Valley VFD, AK-DOF	Immediate Action
Ferry Electric Line Clearance*	All fuels should be fully cleared up to 15 feet from the centerline of the powerline. Additionally, any dead, dying or diseased tree that is within striking distance of the powerline should be identified and cleared to prevent damage/incident during a wind event. Create shaded fuel breaks in and adjacent to powerline distribution corridors	Denali Borough, GVEA	Immediate Action
Ferry Roadside Treatment East*	Roadside fuel treatment to create safer evacuation conditions for residents and access to safety zones	Denali Borough, Tri-Valley VFD	Immediate Action
Stampede Roadside Treatment*	Roadside fuels treatment to create safer evacuation conditions for residents and improve fire fighter access	AKDOT, Denali Borough	Immediate Action

Otto Lake Roadside Treatment * (Boghole and Cemetery)*	Roadside fuels treatment to create safer evacuation conditions for residents and improve fire fighter access. Widening and road resurfacing should also be a priority.	AKDOT, Denali Borough	Immediate Action
Hilltop Roadside Treatment*	Roadside fuels treatment to create safer evacuation conditions for residents and improve fire fighter access. Widening and road resurfacing should also be a priority.	AKDOT, Denali Borough	Immediate Action
Stampede Fuel Reduction Project*	Create high quality defensible space to reduce potential fire severity, increase the chance of home survival during wildfire events, and strengthen the community boundary. Mastication should extend 30-feet into wildland fuels and be accompanied by an additional 30-50 feet of shaded fuel-break with burn piles.	Panguingue Homeowners Association, Tri-Valley VFD, Denali Borough	Immediate Action
Stampede Electric Line Clearance Project*	All fuels should be fully cleared up to 15 feet from the centerline of the powerline. Additionally, any dead, dying or diseased tree that is within striking distance of the powerline should be identified and cleared to prevent damage/incident during a wind event. Create shaded fuel breaks in and adjacent to powerline distribution corridors	Healy town officials, Tri-Valley VFD, AK-DOF	Immediate Action
Garner Mountain Communication Site Fuel Reduction*	Create high quality defensible space to reduce potential fire severity, increase the chance of building survival during wildfire events. Mastication should extend 30-feet into wildland fuels and be accompanied by an additional 30-50 feet of shaded fuel-break with burn piles. Monitor backup generator fuel and maintenance.	Cell providers and telecom carriers	Immediate Action

Crows Nest Roadside Treatment*	Roadside fuels treatment to create safer evacuation conditions for residents and improve fire fighter access. Widening and road resurfacing should also be a priority.	Denali Borough, ADOT, AK-DOF	Immediate Action
Grande Electric Line Clearance*	All fuels should be fully cleared up to 15 feet from the centerline of the powerline. Additionally, any dead, dying or diseased tree that is within striking distance of the powerline should be identified and cleared to prevent damage/incident during a wind event. Create shaded fuel breaks in and adjacent to powerline distribution corridors	Denali Borough, ADOT, AK-DOF	Immediate Action
Grande Roadside Treatment*	Roadside fuels treatment to create safer evacuation conditions for residents and improve fire fighter access. Widening and road resurfacing should also be a priority.	Denali Borough, ADOT, AK-DOF	Immediate Action

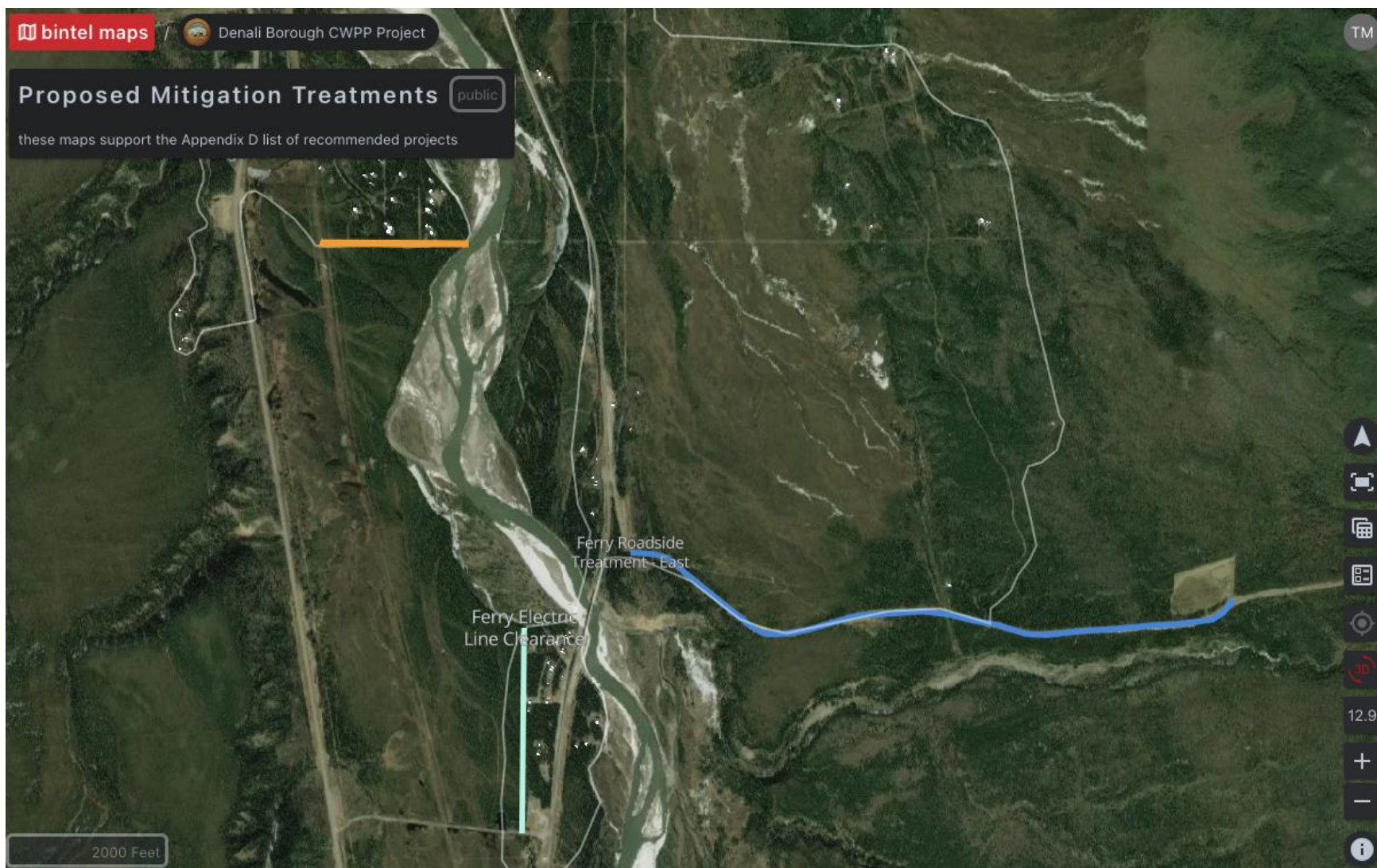


Figure 2 - Ferry Road Area

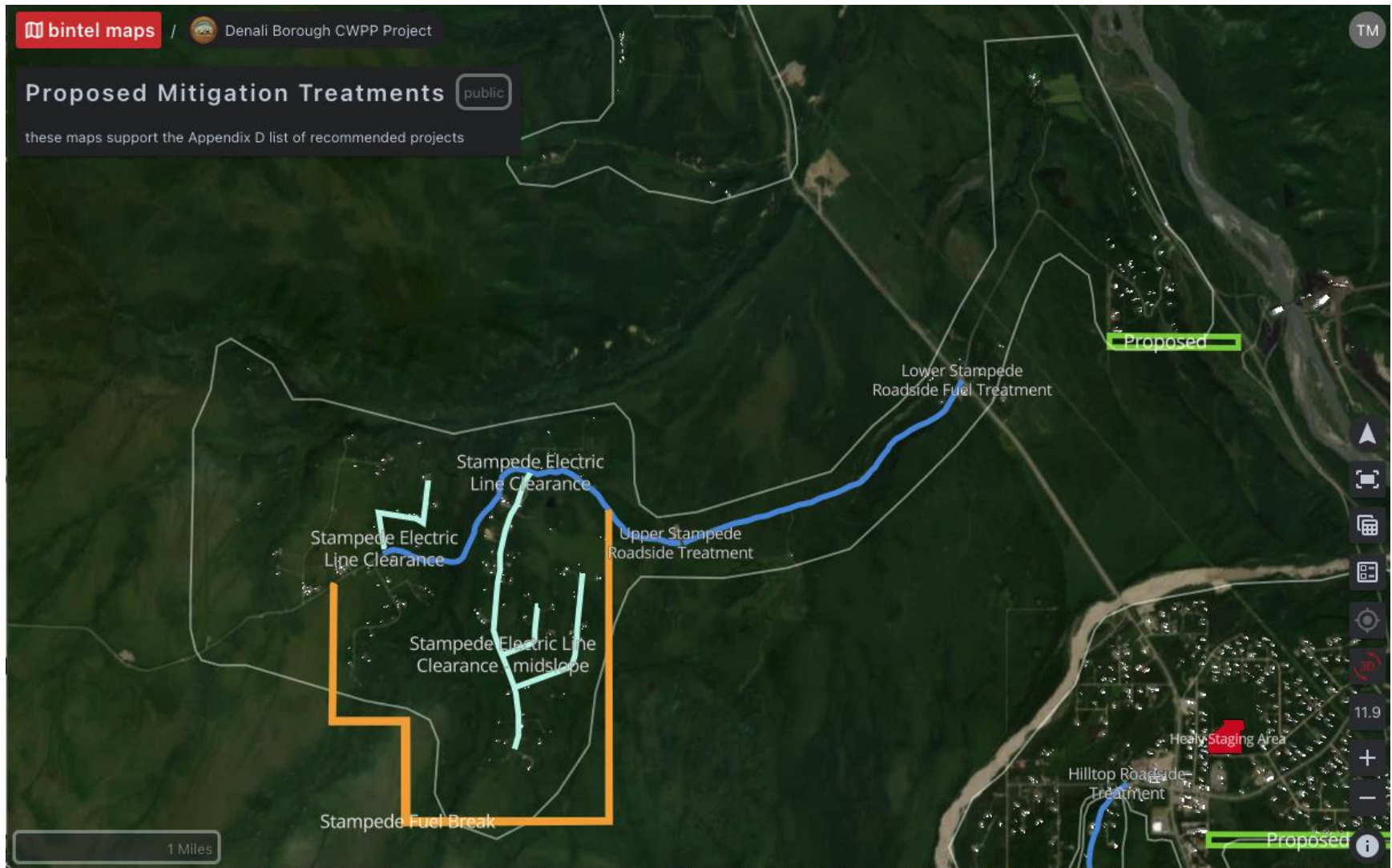


Figure 3 - Stampede/Lignite Area

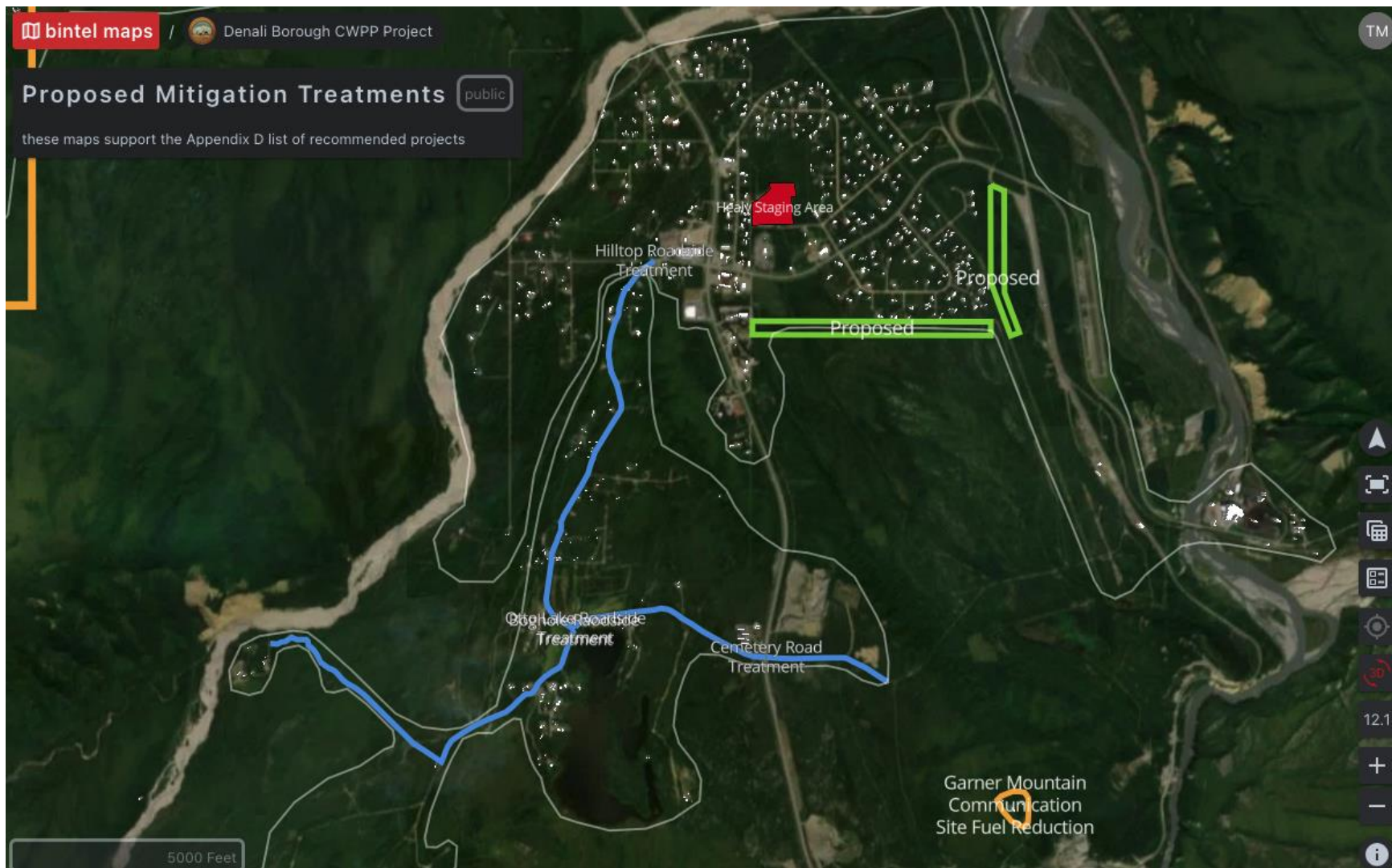


Figure 4 - Healy, Otto Lake & Garner Mountain Area



Figure 5 - Nenana River Canyon Area