

OPTION E, 7 SEATS SERVING 5 DISTRICTS

DISTRICT 1 (CANTWELL TO CARLO CREEK)

Seats = 1

Population = 212

This district starts at the southern boundary and stretches north to Carlo Creek (MP 224)

DISTRICT 2 (MCKINLEY VILLAGE)

Seats = 1

Population = 218

This district starts at Carlo Creek (MP 224) and stretches north to the Nenana Bridge at MP 243

DISTRICT 3 (GREATER HEALY AREA)

Seats = 3

Population = 242 ea.

This district starts at the Nenana Bridge MP 243 and stretches north capturing the communities of Otto Lake, Healy, Lignite, Ferry, and Rock Creek

DISTRICT 4 (PANGUINGUE CREEK, SLATE CREEK, JUNE CREEK, & WINDY CREEK)

Seats = 1

Population = 245

This district includes Panguingue Creek Subdivision, Slate Creek, June Creek and the Windy Creek communities.

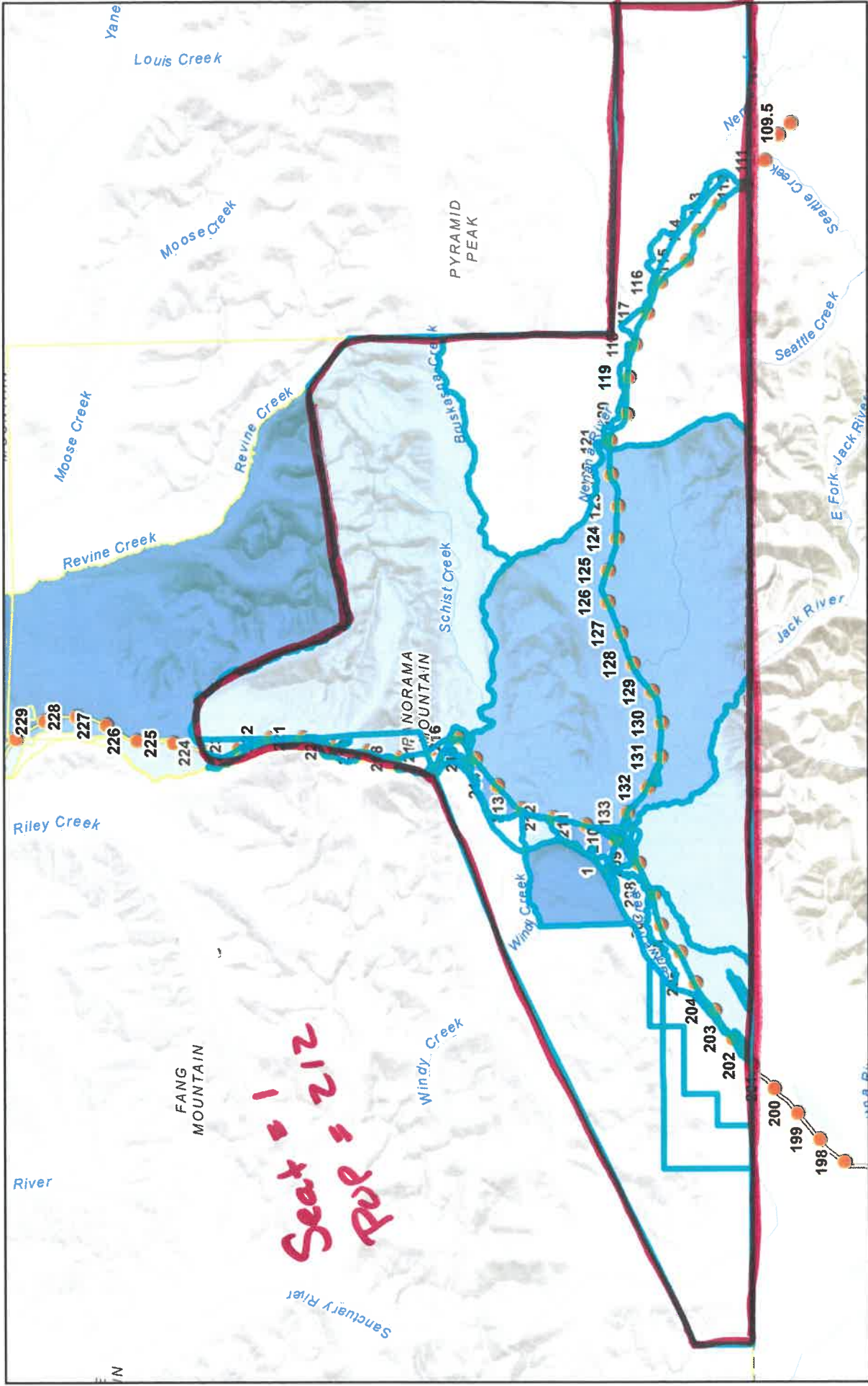
DISTRICT 5 (KOBÉ, CLEAR & ANDERSON)

Seats – 1

Population = 238

This district includes the communities of Kobe, Clear and Anderson.

Carlo Creek MP 224 South, Seat 1, POP 212







Seat = 1
Pop = 212

5/16/2022, 6:39:57 PM

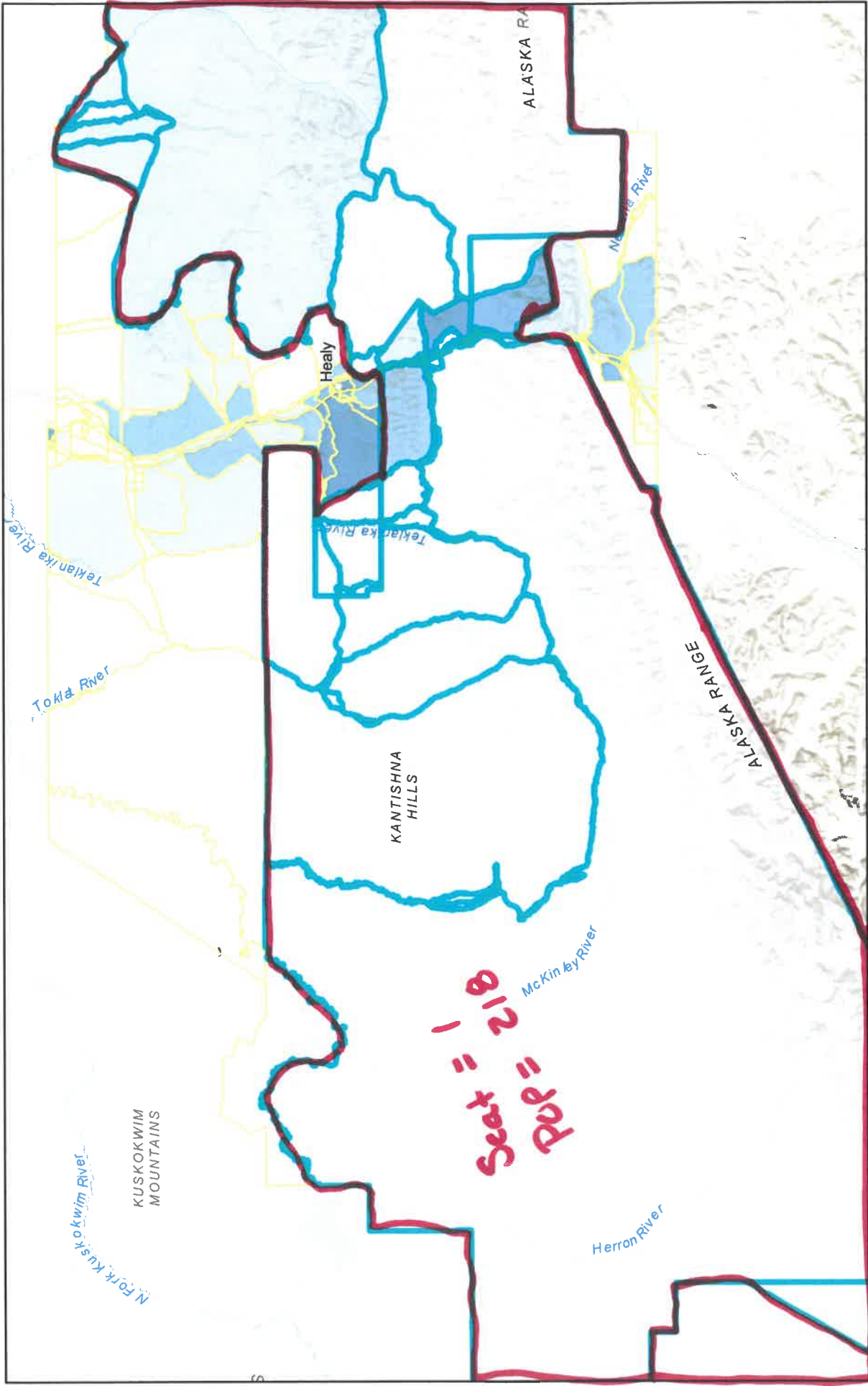
1:577,791

District 1

-  Mile Posts
-  26 - 50
-  1 - 10
-  11 - 25
-  0
-  51 - 97

Sources: Esri, Airbus DS, USGS, NGA, NASA, CGIAR, N Robinson, NCEAS, NLS, OS, NMA, Geodatiystreizen, Rijkswaterstaat, GSA, Geoland, FEIMA, Redistricting Committee Member Copyright Denali Borough, 2022

Carlo Creek MP 224 to Nenana Bridge MP 243 POP 218 Seat 1



5/16/2022, 6:27:36 PM

CENSUS BLOCKS 2020

51 - 97

26 - 50

11 - 25

1 - 10

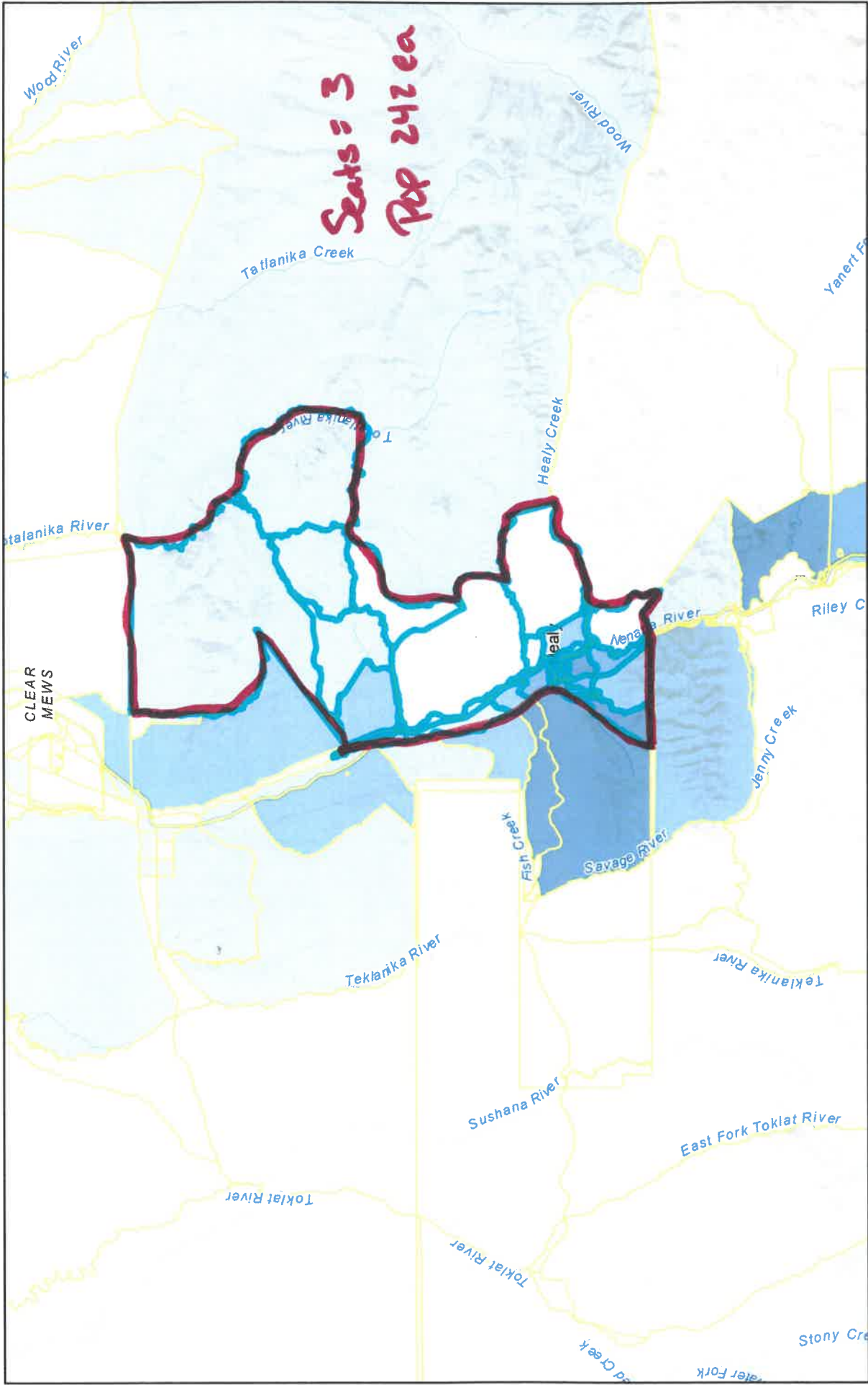
District 2

1:2,311,162



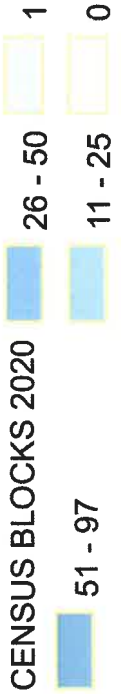
Sources: Esri, Airbus DS, USGS, NGA, NASA, CGIAR, N Robinson, NCEAS, NLS, OS, NMA, Geodatasysteisen, Rijkswaterstaat, GSA, Geoland, FEIMA,

Rock Creek, Ferry, Healy, Otto Lake, Seats = 3, POP 242 ea.



5/16/2022, 6:59:31 PM

CENSUS BLOCKS 2020



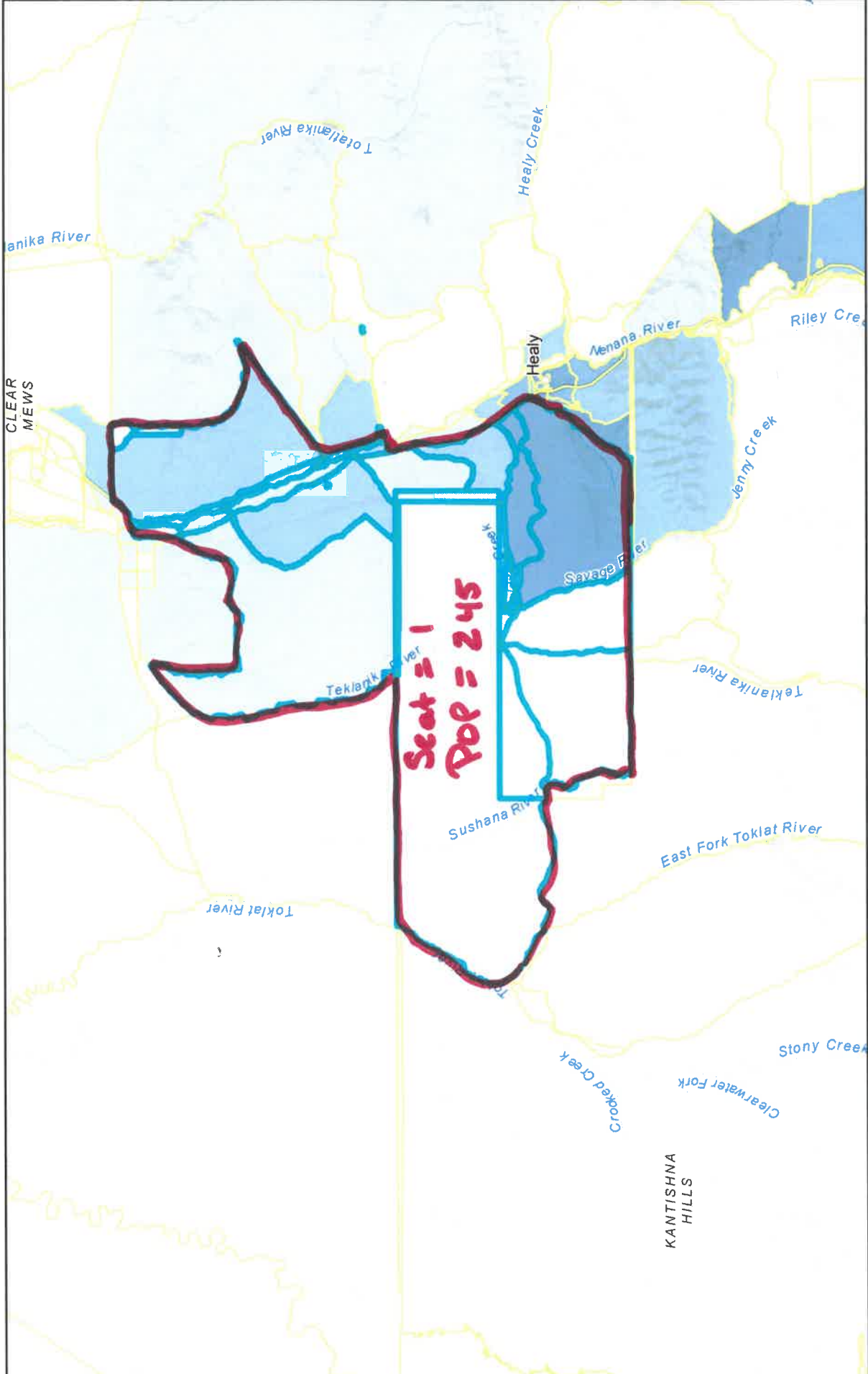
District 3

1:1,155,581



Sources: Esri, Airbus DS, USGS, NGA, NASA, CGIAR, N Robinson, NCEAS, NLS, OS, NMA, Geodataspreisen, Rijkswaterstaat, GSA, Geoland, FEMA,

SEATS, North West District, POP 245, Windy Creek, June Creek, Slate Creek, Panguingue Cree



5/16/2022, 11:30:30 AM

CENSUS BLOCKS 2020

51 - 97

26 - 50

1 - 10

11 - 25

District 4

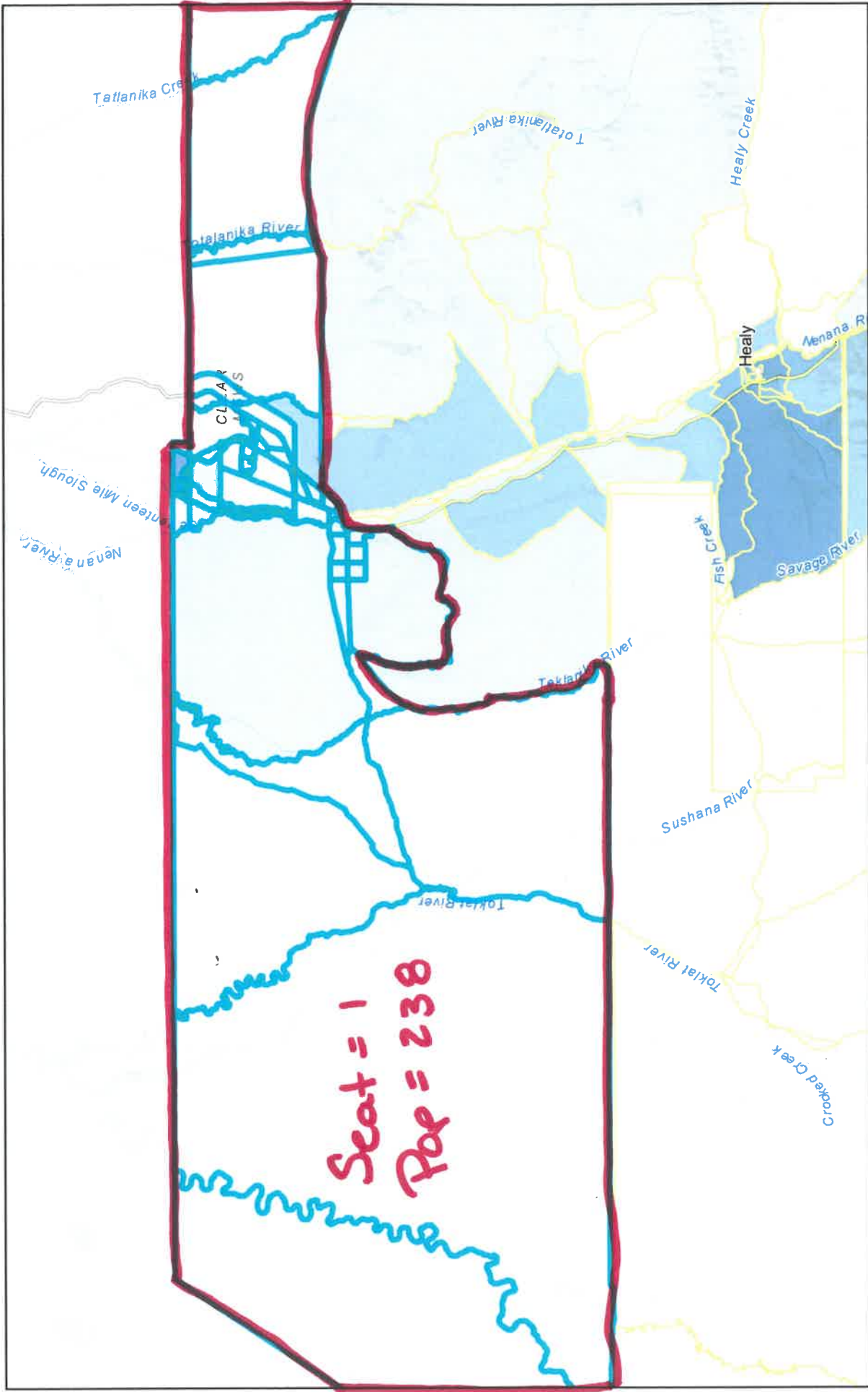
1:1,155,581



Sources: Esri, Airbus DS, USGS, NGA, NASA, CGIAR, N Robinson, NCEAS, NLS, OS, NIMA, Geodatasystemen, Rijkswaterstaat, GSA, Geoland, FEMA,

Redistricting Committee Member
Copyright Denali Borough, 2022

7 SEATS, North District, POP 238, Kobe, Clear, Anderson



5/16/2022, 11:14:12 AM

1:1,155,581

CENSUS BLOCKS 2020



District 5

Sources: Esri, Airbus DS, USGS, NGA, NASA, CGIAR, N Robinson, NCEAS, NLS, OS, NMA, Geodatasysteisen, Rijkswaterstaat, GSA, Geoland, FEMA, Redistricting Committee Member Copyright Denali Borough, 2022